



THE ULTIMATE IN FLOOR PREPARATION





Cemimax is a Professional Manufacturer, providing a complete flooring installation solution. Cemimax Provides our customer's the complete flooring installation system of cementitious based substrate preparation products and adhesive's for floor covering. Through innovation technology and high quality product's, we along with our clients have created successful projects around the world. We continue to focus on strong research and development to ensure Cemimax only produces and supplies the highest quality assured environmentally friendly and most cost-effective products in the market. We uphold the core value excellence from enthusiasm and passion within our team. Today Cemimax is a leading Manufacture providing the best flooring installation products on a global scale that the world is now experiencing.

“To Expect Nothing Less” is our Goal, The Cemimax team believes that a sustainable and long-term growth aims for our company to become the best partner to our Customers and their Success.



CEMIMAX A300

Very high strength for resilient floor coverings

DESCRIPTION:

Cemimax A300 is a very low emission dispersion adhesive for almost all textile coverings, therefore truly universal strong thread-formation, giving reliable adhesion in interior areas.

ESPECIALLY SUITABLE FOR:

- Textile coverings with synthetic secondary backings
- Textile coverings with foam-, latex- or fleece- backings
- Woven goods, needlepunch and natural fibre carpets
- Felt-backed PVC and cushioned vinyl of thickness <2mm coverings

PRODUCT PROPERTIES:

- Stable quality Bonding, layer has durable resilience.
- Good water resistance, excellent bonding strength.
- Very high initial tack and final bonding strength.
- Easy application, high coverage rate.
- Low VOC

TECHNICAL DATA: (Under normal conditions at 20 °C.)

Packaging: 5kg, 20kg Plastic drum

Shelf-life: Min. 12 months

Colour: Cream-white

Working temperature: +5°C - 35°C

Consumption: 160-200 g/ m²

Open time: 5-30 minutes

Working time: 1-2 hours

Set to traffic: After 24-48 hours

Final strength: After 5-7 days



CEMIMAX DL30

Self-leveling Compound

DESCRIPTION:

DL30 is an advanced cement and polymer based levelling and smoothing compound. DL30 is formulated for leveling work on standard construction in universal areas. DL30 is suitable for internal use on new or existing substrates for trafficable areas that are used internally as a underlayment.

PRODUCT PROPERTIES/BENEFITS:

Plastic, dry cement mortar with finely graded fillers. When mixed with water, produces a hydraulic-setting smoothing compound with good flow properties and high coverage.

COMPOSITION:

Special cements, mineral fillers, polyvinyl-acetate-copolymers, flow agents and additives.

- Easy apply
- Quick setting
- Superior flow – fast application
- Flexible – hand mix or pump application
- Very economic
- Interior use

TECHNICAL DATA:

Compressive Strength

After 1 day approx. 15MPa

After 7 days approx. 20MPa

After 28 days approx. 30MPa

Tensile Bending Strength

After 1 day approx. 4MPa

After 7 days approx. 5MPa

After 28 days approx. 6MPa

Packaging Size: 25kg/bag

Shelf-life: 6-12 months

Coverage: Approximately 5-6m² at 3mm thick

VOC Level: <0.5 mg/m³

Working time: 15-25mins

Drying time: 10-30mins

Suitable for direct stick



DL59

Self-smoothing and levelling compound as surface overlay floors

DESCRIPTION:

DL59 is a cement based levelling compound with very high compressive strength to C40. DL59 is especially suitable for high traffic, heavy wear location. DL59 is especially used as overlays for polished concrete floors.

PRODUCT PROPERTIES/BENEFITS:

Plastic dry cement mortar with finely graded fillers. When mixed with water, produces a hydraulic-setting smoothing compound with good flow properties and high coverage.

COMPOSITION:

Special cements, mineral fillers, polyvinyl-acetate-copolymers, flow agents and additives.

- Super smooth - requires no sanding
- Extremely high flexible strength - 60%
- Versatile - apply 1.5mm to 40mm in one application
- Rapid hardening - walkable from 2 hours
- Superior flow - fast application
- Flexible - hand mix or pump application
- Can be polished
- For Interior and Exterior use
- Suitable for Radiant Floor Heating systems
- Pigments can be added for colour
- Aggregates can be added for exposed stone effect

TECHNICAL DATA:

Compressive Strength

After 1 day approx. 15MPa

After 7 days approx. 25MPa

After 28 days approx. 40MPa

Tensile Bending Strength

After 1 day approx. 5MPa

After 7 days approx. 7MPa

After 28 days approx. 8MPa

Packaging Size: 20kg/bag

Shelf-life: 6-12 months

Coverage: Approximately 6m² at 3mm thick

Working time: 20-30mins

VOC Level: <0.5 mg/m³

Drying time: 2hrs

Suitable for direct stick



DP80

One component, low emission, multipurpose dispersion primer with carbon fibre technology for non absorbency substrates

DESCRIPTION:

Dispersion primer low emission, film forming primer for use over non-absorbent surfaces including non-water soluble adhesive residues. The product cannot be diluted with water and for interior and exterior use, providing overlayment compound DL10 or DL59 is applied within drying time of primer. Not to be left exposed to the elements for more than 2 hours.

SUITABLE FOR:

- Use on non-absorbent substrates, very suitable for existing surfaces in need of refurbishment, such as well-bonded and non-water-soluble adhesive residues including cutback adhesive.
- Dense & smooth surfaces, on soundly bonded ceramic and natural stone tiles, terrazzo, water resistant coatings, epoxy coatings or metal surfaces.

PRODUCT PROPERTIES:

- Ready to use
- Excellent bond
- Very fast drying
- Carbon fibre technology
- Solvent-free

BINDERS:

Modified styrene-acrylate copolymers, wetting and defoaming agents, preservatives and carbon fibre

TECHNICAL DATA:

Under normal conditions 20°C

Packing: Plastic Bucket

Packaging Size: 20kg or 5kg

Shelf-life: 12 months

Application Temp Range: +5°C - 35°C

Consumption: Approx 12m²/1 Litre

Drying time: Approx 1 hour

Touch Dry: 15-20mins



DP101

Cemimax DP101 is Extremely high performance dispersion primer for absorbent subfloor.

DESCRIPTION:

Dispersion Primer with a wide range of applications, for interior and exterior use, providing overlayment compound with all our levelling products is applied within drying time of primer. Not to be left exposed to the elements for more than 2 hours.

ESPECIALLY SUITABLE FOR:

Use on surfaces with well-bonded, waterproof adhesive and smoothing compound residues.

PRODUCT PROPERTIES:

- Ready to use.
- Excellent bond
- Rapid drying
- High coverage
- Solvent-free.
- Suitable for exterior use

BINDERS:

Modified styrene-acrylate copolymers, wetting and defoaming agents, preservatives and carbon fibre

TECHNICAL DATA:

Under normal conditions 20°C

Packing: Plastic Bucket

Packaging Size: 20kg or 5kg

Shelf-life: 12 months

Application Temp Range: +5°C - 35°C

Consumption: Approx 12m²/1 Litre

Drying time: 4-6 hours

Touch Dry: 15-20mins



DP200

1-component PU Fast-Drying Primer and Moisture Vapor Retarder

DESCRIPTION:

Cemimax DP200 is a pure polyurethane resin with very high quality developed particularly for subfloors that must be quickly brought to a condition ready for covering installation. Special can be used as low moisture vapor retarder for concrete and cement-based subfloors. DP200 can be applied to substrates with humidity up to 6% CM. For interior and exterior use.

ESPECIALLY SUITABLE FOR:

Use on substrates with low damp, on ceramic, terrazzo, stone subfloors, surfaces with well-bonded, waterproof adhesive and smoothing compound residues.

PRODUCT PROPERTIES:

- Fast drying
- Increase the strength of the substrate
- Moisture barrier
- Excellent covering and filling capacity
- Solvent free
- Fast curing
- Easy to apply
- Excellent coverage

TECHNICAL DATA: (Under normal conditions at 20 °C)

Packaging: Plastic bucket

Packsize: 20,5 kg

Shelf-life: 12 months

Colour: Light yellowish

Working temperature: minimum 50 °F (10 °C) at floor level 60 to 80 °F (16 – 27 °C) on radiant heat systems

Drying time: Absorbent surfaces: 40 – 90 min (per coat) Dense surfaces: 60 – 150 minutes.

Application and consumption

100 - 150 g/m² : As a primer when only one layer is applied (up to 92% R.H. for one coat).

250 - 350 g/m²: As a moisture barrier when two to three layers are applied (up to 98% R.H. for two coat).

Consumption is dependent on surface structure and absorbability of subfloor.



PP3

Patching compound for repair, filling and patching and raise floors

DESCRIPTION:

PP3 is an advanced cement and polymer-based patching compound for repair, filling and patching up to 13mm depth. Can be used on a variety of substrates prior to installation of most flooring products. Priming is not required for most applications.

PRODUCT PROPERTIES/BENEFITS:

Plastic dry cement mortar with finely graded fillers. When mixed with water, produces a hydraulic-setting smoothing compound.

SUITABLE FOR:

- New or old cement levelling compounds
- Existing substrates with well-bonded, non-water-soluble
- Adhesive residues drying
- Large and small format tile and natural stone
- Plywood underlayment
- All standard slabs, concrete or other substrate types
- Heavy traffic areas in domestic & commercial applications
- Radiant floor heating systems

BINDERS:

Special cements, mineral fillers, polyvinyl-acetate-copolymers, and additives.

- Fast dry formula
- High strength
- Very fine aggregates
- Variable water range
- Smooth surface finish
- Excellent absorbency
- Versatile product

TECHNICAL DATA:

Pack-size: 5kg bag

Shelf-life: 6-12 months

Coverage: Approx. 2.8m² at 3mm per bag

Water mixing: Approx. 1:2 (water : powder)

Dry time:

After approx. 10 min. for walked on

After approx. 15 min. for floor covering

After approx. 12 hours for wood flooring



PP5

Cementitious, Rapid Repair Patching and Smoothing Compound

DESCRIPTION:

PP5 is an advanced cement and polymer mix that is highly versatile, rapid drying patching compound. Its fine aggregates allow it to be installed from a feather edge up to a high fill depth in one application. Superior bonding allows it to be applied over existing concrete, well-bonded flooring, properly prepared non-water soluble adhesive, well-bonded gypsum, all without having to use primer in most applications.

PRODUCT PROPERTIES/BENEFITS:

- High depth limitation
- Fast Setting - within 15 minutes
- Superior Bonding - Eliminates the need for a primer in most applications
- Low to No VOC - Healthy indoor air quality

SUITABLE SUBSTRATE CONDITIONS:

- Installed over all existing flooring that is structurally sound, thoroughly clean and free of polishes, waxes, grease, asphalt and any other contaminant that might act as a bond breaker.
- Can be applied over properly prepared and installed epoxy moisture barriers and PU vapor retarders.
- For use where Radiant Heat systems are being installed.
- Existing surfaces in need of refurbishment, such as well bonded, non-water soluble adhesive residues including cutback.
- For Interior and Exterior use

TECHNICAL DATA:

Packaging: 20kg bag

Storage: 6-12 months

Water ratio: 100:12.5 (powder : water ratio)

Working Time: 10-15 minutes

Dry Time: Moisture Sensitive Flooring 15 Minutes

Dry Time: High depth installation from 15-30 mins



PU SEALER

2k-water based PU sealer for resilient flooring long term protection

DESCRIPTION:

Special water-based 2 part polyurethane sealer for the long-term protection of floors. Only for professional users. Reduces dirt adhesion and the time needed for day-to-day maintenance. Hardwearing sealer film, excellent elasticity and good resistance against colorless chemicals. Easy and safe to apply with excellent adhesion. High solids content. No intrinsic yellowing.

Anti-slip classification R9

suitable for sports floors (satin).

Very low emission .

Gloss grades: gloss, satin, mat

AREAS OF APPLICATION:

- Floor coverings made of PVC and LVT with smooth, or slightly structured, grained surfaces.
- overlays of cement based leveling , terrazzo
- Linoleum floors
- Epoxy and PU floors.
- Wood and cork floors after priming with recommend primer.

Suitability for safety floorings, more structured surfaces and studded floors must be ascertained in the specific building before use (*). recommend primer.

Please pay attention to our technical recommendations specifically for floors and buildings

CONSUMPTION:

Per coating approx. 50 -80 g/m² . On wood, cork or decorative screed floors approx. 80-100 ml/m² per coating.

In the case of a very absorbent sub-surface, higher consumption is possible, depending on absorbency.



CEMITOP

Self levelling polishable decorative overlay for most types of floors

DESCRIPTION:

Our CEMITOP decorative overlay is a cement based levelling compound designed with our range of Grey pigment components. CEMITOP provides a seamless and decorative finished surface with our range of three different Shades of Grey. JETGREY, KRISGREY and MAXGREY are all premixed colours in our 20kg bags for easy application.

PRODUCT PROPERTIES/BENEFITS:

Plastic dry cement mortar with finely graded fillers. When mixed with water, produces a hydraulic-setting smoothing compound with good flow properties and high coverage.

COMPOSITION:

Special cements, mineral fillers, polyvinyl-acetate-copolymers, flow agents and additives.

- Super smooth – requires no sanding
- Extremely high strength of compressive and bending
- Versatile – apply 1.5mm to 40mm in one application
- Rapid hardening – walkable from 2 hours
- Superior flow – fast application
- Flexible – hand mix or pump application
- Can be polished

TECHNICAL DATA:

Compressive Strength

After 1 day approx. 15MPa

After 7 days approx. 25MPa

After 28 days approx. 35MPa

Tensile Bending Strength

After 1 day approx. 4MPa

After 7 days approx. 5MPa

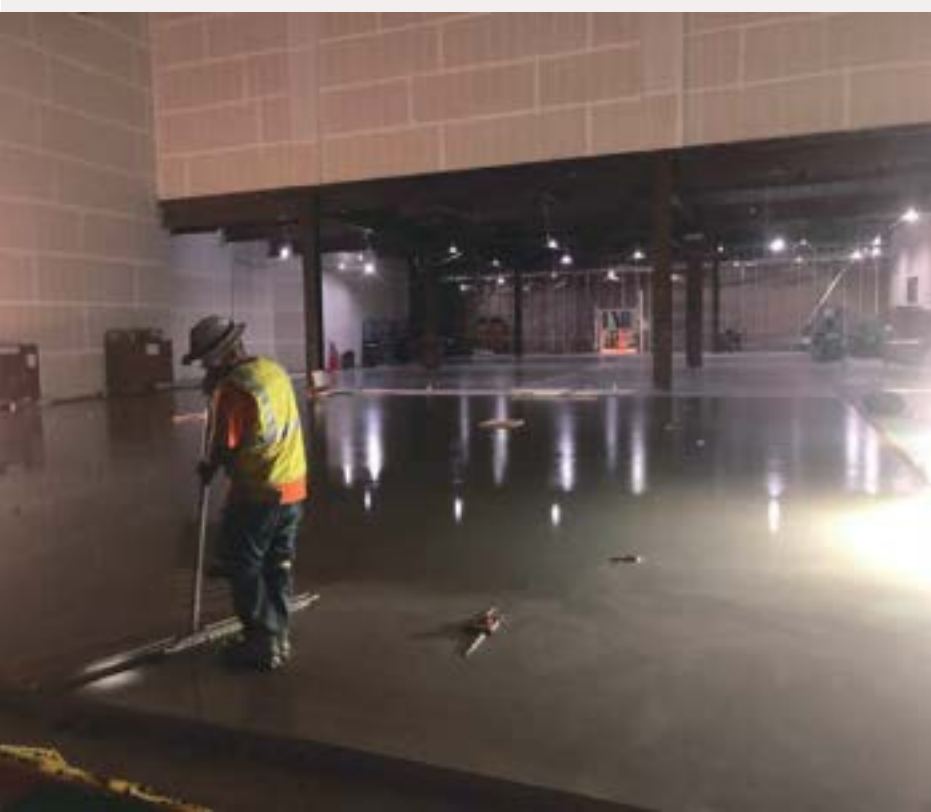
After 28 days approx. 7MPa

Pack-size: 20kg/bag

Shelf-life: Min,12 months

Coverage: Approximately 5-6m² at 3mm thick







Cemimax Asia Pte Ltd

Singapore Warehouse:

621 Aljunied road 01-23 Li Po building (s) 389834